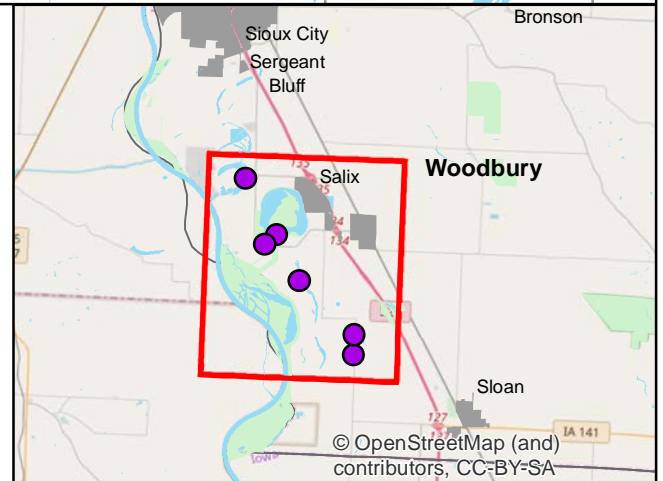
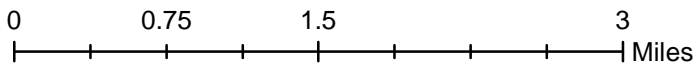
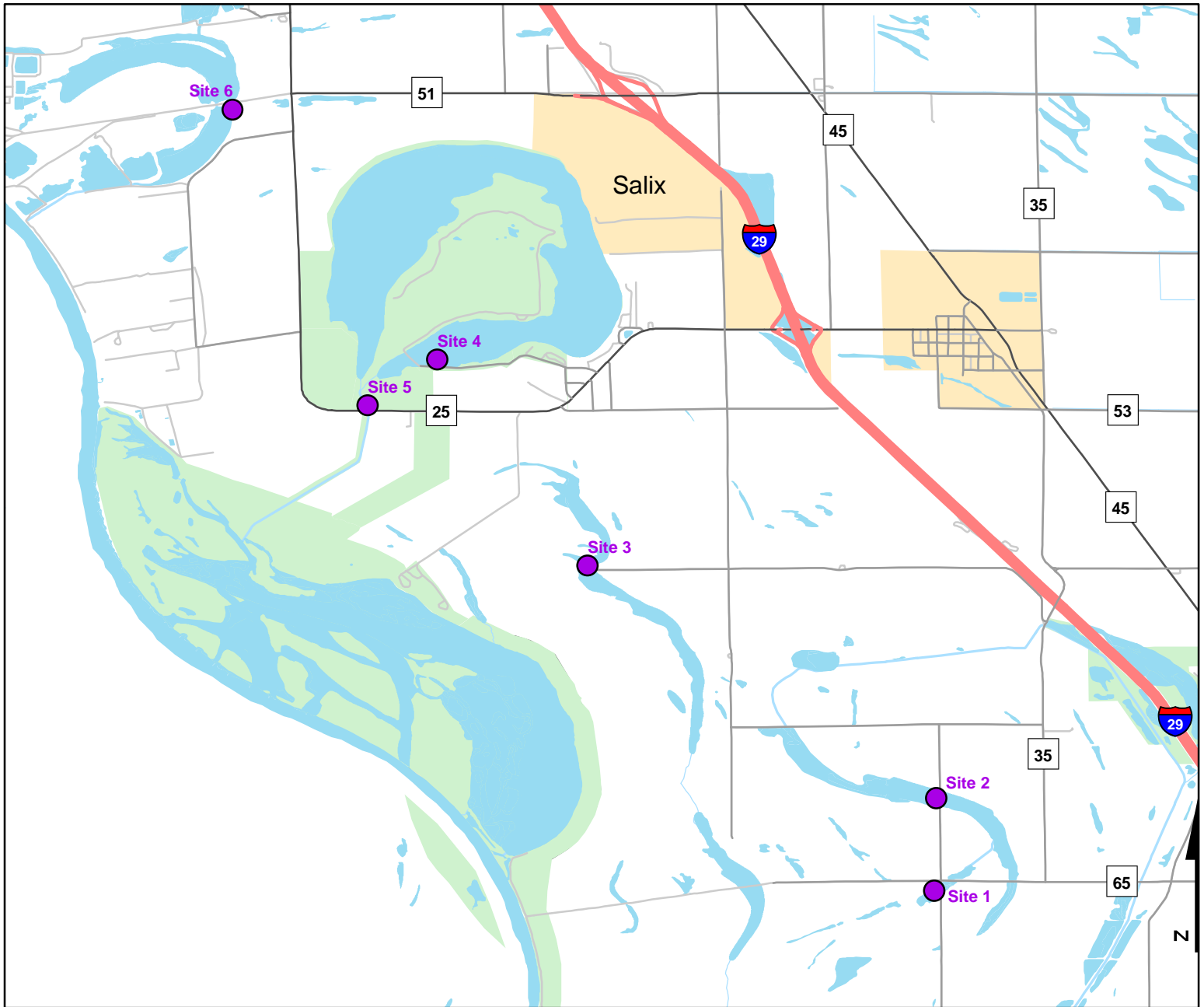




# Volunteer Wildlife Monitoring Program (VWMP) Frog and Toad Survey

Route ID: 87 County: Woodbury

Click for Google Maps to Site 1: <https://www.google.com/maps/dir/?api=1&destination=42.2569112316,-96.2904809615>

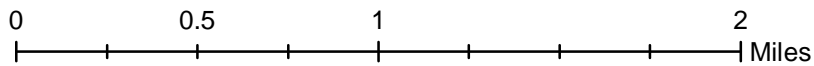
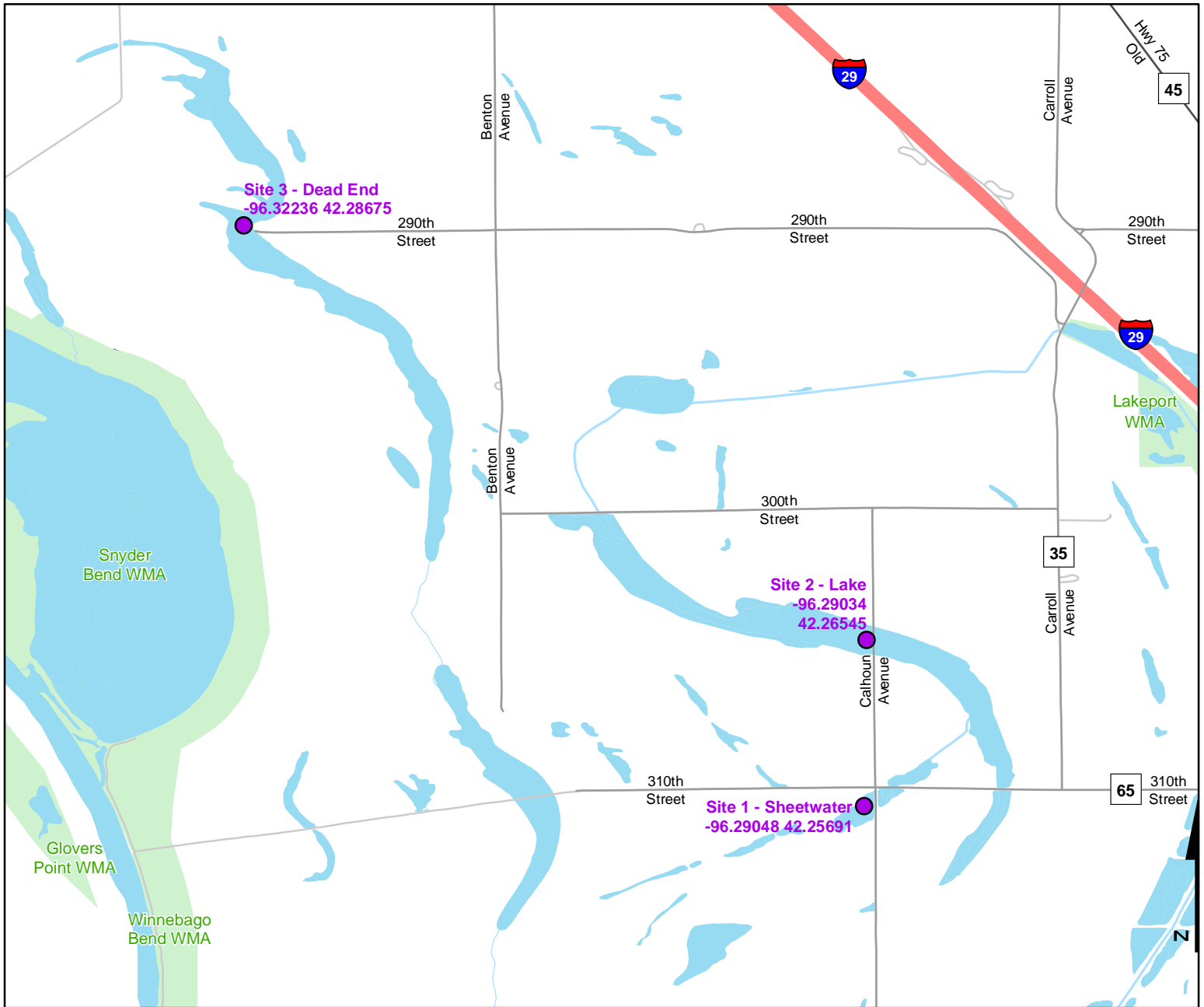




# Volunteer Wildlife Monitoring Program (VWMP) Frog and Toad Survey

Route ID: 87 County: Woodbury

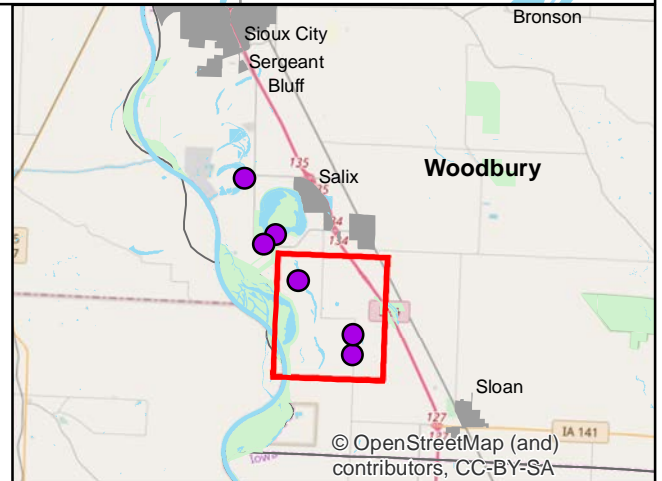
Click for Google Maps to Site 1: <https://www.google.com/maps/dir/?api=1&destination=42.2569112316,-96.2904809615>



**DNR**  
**Volunteer Wildlife Monitoring Program**

## Legend

----- Trails

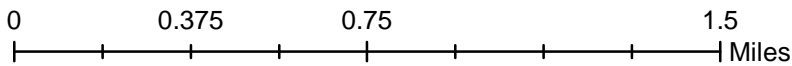
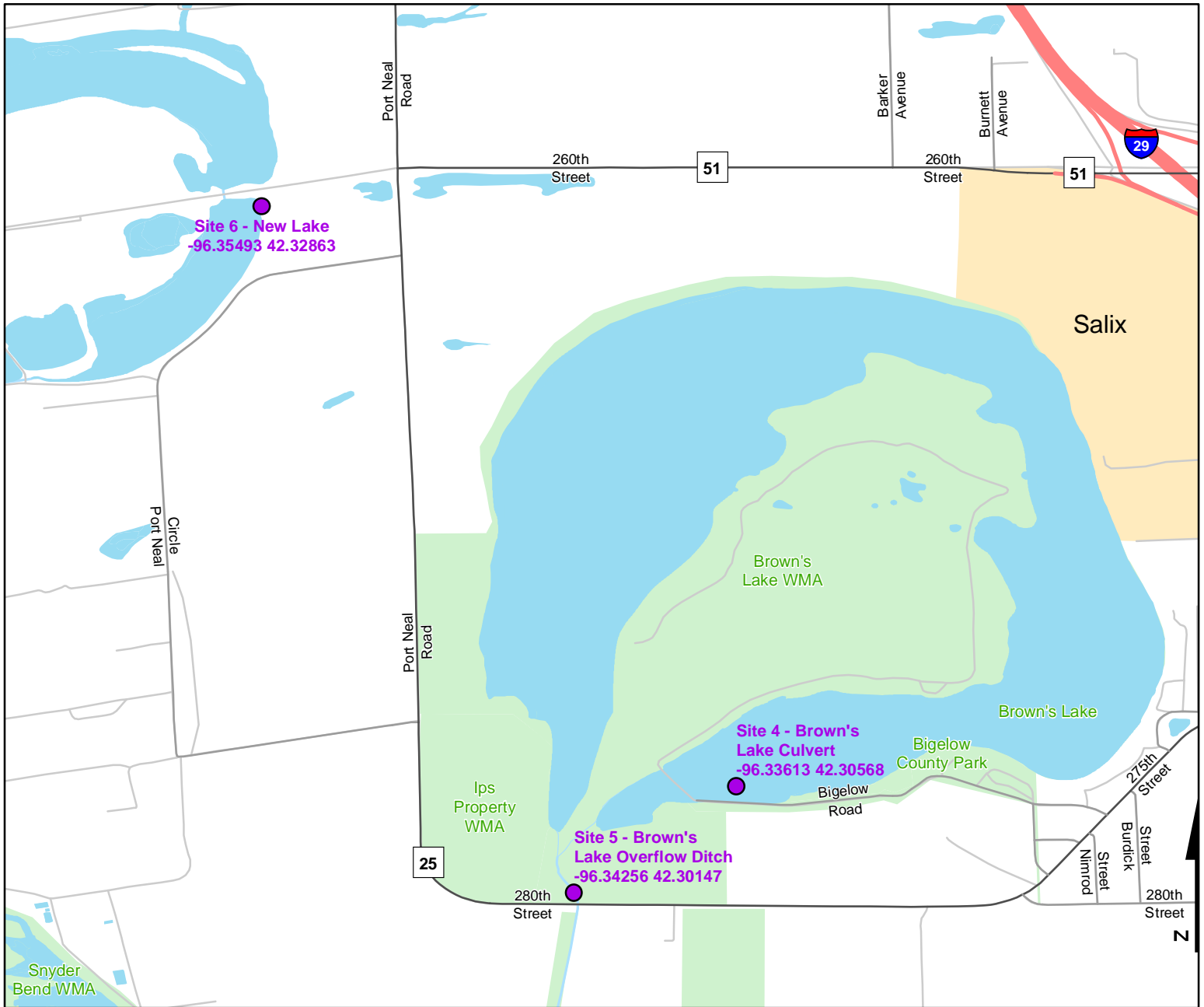




# Volunteer Wildlife Monitoring Program (VWMP) Frog and Toad Survey

Route ID: 87 County: Woodbury

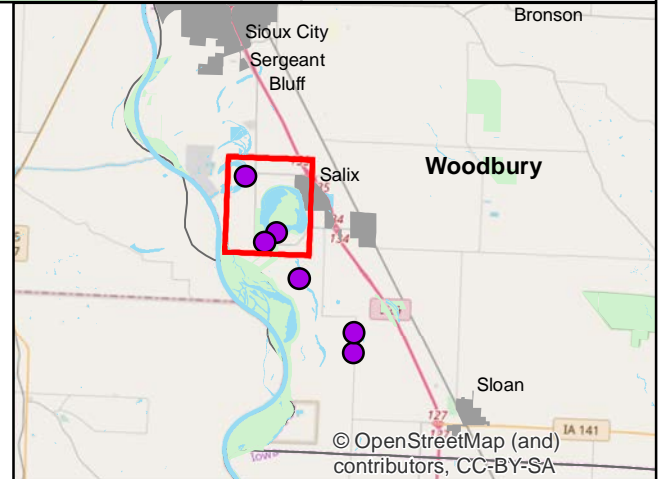
Click for Google Maps to Site 1: <https://www.google.com/maps/dir/?api=1&destination=42.2569112316,-96.2904809615>



**DNR**  
**Volunteer Wildlife Monitoring Program**

## Legend

----- Trails



© OpenStreetMap (and contributors), CC-BY-SA



# Frog and Toad Call Survey Route Description

Route ID **87**

Established: 1992

Site Number	Name	County	Latitude	Longitude	Directions
1	Sheetwater	Woodbury	42.2569112	-96.290481	SW of intersection of 310th and Calhoun
2	Lake	Woodbury	42.2654469	-96.2903384	On Calhoun Avenue, on the bridge
3	Dead End	Woodbury	42.2867466	-96.3223605	
4	Brown's Lake Culvert	Woodbury	42.3056795	-96.3361309	
5	Brown's Lake Overflow Ditch	Woodbury	42.3014671	-96.3425556	
6	New Lake	Woodbury	42.3286328	-96.3549291	D-51 Causeway